

# Adelphi University Friends of the Library

## MEMBERSHIP FORM

We welcome new members to join us, as we celebrate our sixtieth anniversary and embark upon our next sixty years of support for the Adelphi University Library!

Name: \_\_\_\_\_

Street: \_\_\_\_\_

City: \_\_\_\_\_

State/Zip: \_\_\_\_\_

Phone: \_\_\_\_\_

Email: \_\_\_\_\_

Check level of gift below:

Contributing Membership at \$25/year

Supporting Membership at \$50/year \*

Sponsoring Membership at \$100/year\*

\* Entitles members to Library borrowing privileges

Please send a check payable to:

Friends of the Adelphi University Library

P.O. Box 383

Garden City, NY 11530

Further inquiries can be made to the Office of the Dean of Adelphi Libraries, (516) 877-3520.

Thank you for your support!

## THE CONTINUED SUPPORT OF THE FRIENDS

Over the past sixty years the Friends have fulfilled their founding purposes in numerous ways:

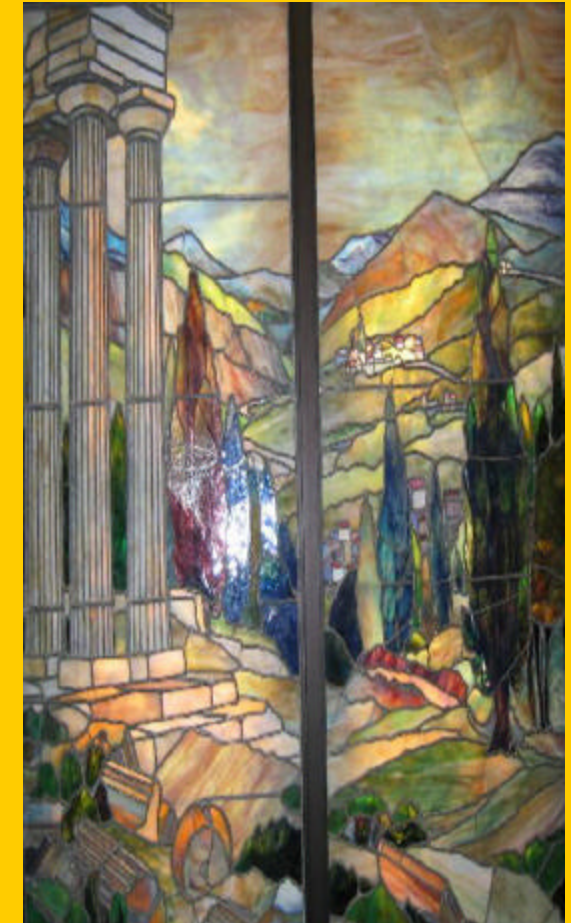
- ✧ By annual contributions to the library that enabled the purchase of material which otherwise could not have been acquired
- ✧ By developing several special collections of significant strength
- ✧ By sponsoring an annual series of outstanding programs and lectures open to the community at large

## RUTH S. HARLEY ENDOWMENT

A generous gift to the Friends' endowment was recently bestowed by the late Ruth S. Harley, the former Adelphi Dean of Women. It is through such support that we hope to continue to fulfill the vision of our founding members.

## THANK YOU, FRIENDS!

On the occasion of the Friends' 60th Anniversary, we wish to express our deep appreciation to those Friends, both past and present, who have given so generously of their time, talents, and financial support.



### Sanford Memorial Window

This stained glass window, originally installed in Adelphi's Brooklyn Building, was a gift from the class of 1914. It is now located in the Hay Periodicals Lounge of Swirbul Library.

## THE FRIENDS OF ADELPHI UNIVERSITY LIBRARY

The Friends of the Adelphi University Library was founded in 1947 by a group of dedicated alumnae, faculty members, faculty wives, and local citizens. 2007 is our sixtieth anniversary year. Please join us as we continue our work in supporting the Library collections.

### MISSION

The original mission of the Friends was to:

- ✧ provide an understanding of the work of the Library,
- ✧ build up a greater realization of the importance of the Library to the future development of the University and the community,
- ✧ encourage gifts and bequests to the Library, and
- ✧ serve as a medium through which the Friends and others may become acquainted and share their enthusiasm for books and libraries.

This remains our mission today.



### COLLECTIONS/GIFTS

Among the collections made possible by the Friends are:

- ✧ Papers of America's Founding Fathers and Presidents
- ✧ The Hugo and Florentina Leipniker William Blake Collection of works by and about the eighteenth century poet and artist
- ✧ Marion N. Groves Founding President's Memorial Collection of American Women Writers, Reformers, and Educators
- ✧ Janith Stewart Kice Women in Science Collection
- ✧ The C. Rexford Davis William Cobbett Collection on the influential British parliamentarian, pamphleteer, and radical
- ✧ The Helene and Josephine Lewinsohn William Hone Collection on the British radical writer, publisher, political satirist, and social reformer

The Friends continue to move forward in their work by supporting the establishment of two new special collections:

- ✧ The Children's Illustrated Literature Collection
- ✧ The Donald V.L. Kelly Small Press Collection

The Friends also support the Library with funds for electronic resources that the founding members could not have envisioned, such as the *Oxford English Dictionary* online and a self-check kiosk.

### MEMBERSHIP/SPECIAL DONATIONS

The ongoing work of the Friends is dependent upon annual membership dues and special donations.

### BOOKPLATE PROGRAM

Books can be purchased either "in memory of" or "in honor of" a friend or loved one. The donor may select an appropriate book title or subject area. A special bookplate is placed in the book stating the name of the person memorialized or honored, as well as the donor's name. The *Friends Newsletter* is published four times a year and usually includes a "wish list" of new books and materials which are needed by the libraries.

### BENEFITS OF MEMBERSHIP

Members help support the Library's academic endeavors and also enjoy a range of programs and events related to the Library's functions. Published three times a year, the *Friends Newsletter* lists news, upcoming events, and programs.

Benefits include:

- ✧ invitation to the annual Friends Fall Art Lecture
- ✧ invitation to the Friends annual meeting
- ✧ Library borrowing privileges (for Supporting or Sponsoring Members)
- ✧ invitations to outstanding programs and lectures